



UPPER GI ENDOSCOPY

ELUXEO™ VIDEO GASTROSCOPE EG-740N UltraSlim Type



This ultraslim gastroscope with a distal end diameter of 5.8 mm is particularly suited to paediatric use and for cases featuring stenosis. The slim distal end also supports a soft transnasal insertion and reduces patient discomfort.



Field of view	140°
Observation range	3–100 mm
Bending capability	Up 210° / Down 90° Right 100° / Left 100°
Distal end diameter	5.8 mm
Flexible portion diameter	5.9 mm
Working channel diameter	2.4 mm
Working length	1,100 mm
Total length	1,400 mm

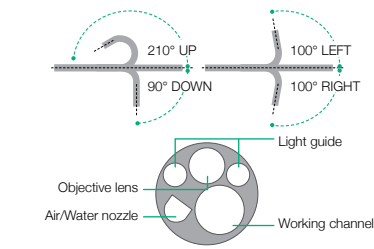
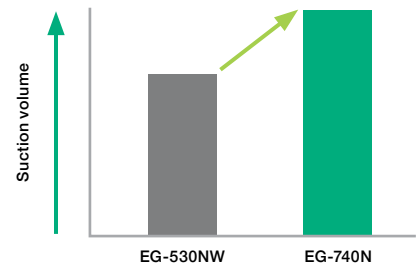
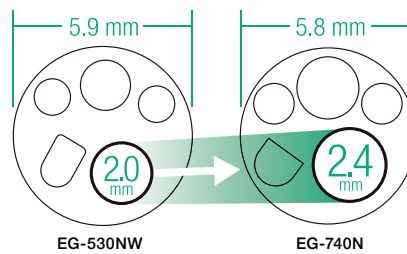


Image area & forceps entry position

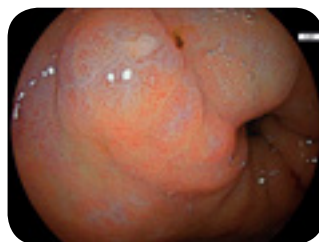
ENLARGED WORKING CHANNEL FOR IMPROVED SUCTION PERFORMANCE

The 2.4 mm working channel of the EG-740N has a greater suction capacity compared to other ultraslim gastroscopes, especially when an accessory is inserted into the working channel.

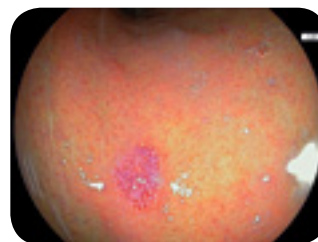


LCI MODE FOR IMPROVED DETECTION IN UPPER GI TRACT

In addition to WLI, the ultraslim EG-740N features LCI (Linked Colour Imaging) for improved detection of malignant lesions or inflammation.



Atrophic Gastritis with Intestinal Metaplasia



Hyperplastic Polyp



Hyperplastic Polyp



Optimal illumination using variable LED light intensity.



Increased contrast in red colour leads to improved detection of inflammation and accurate delineation.



Easy to plug in with an integrated wireless power supply to provide high speed transmission of data.



The Super CCD and high performance optical system ensures high quality images. It provides brilliant images that can facilitate procedures for detection and treatment of lesions.



The combination of special light wavelengths results in improved and accurate contrast imaging.



Grip is designed to have a comfortable feel to optimise performance and minimise stress.