



- HIGH QUALITY IMAGES
- LARGER AND BRIGHTER IMAGES
- SUPPORT OF ACCURATE PROCEDURES

ER-530S2

Video Rhino-Laryngo Endoscope



GASTROENTEROLOGY

ER-530S2

Realizing enhanced observation and diagnosis



HIGH QUALITY IMAGES

High resolution Super CCD technology is used in this new Rhino-Laryngo endoscope. This increase in image quality can help to enhance observation.

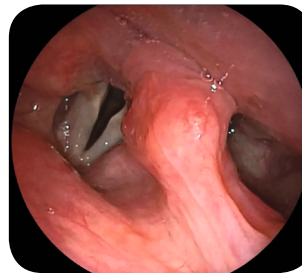
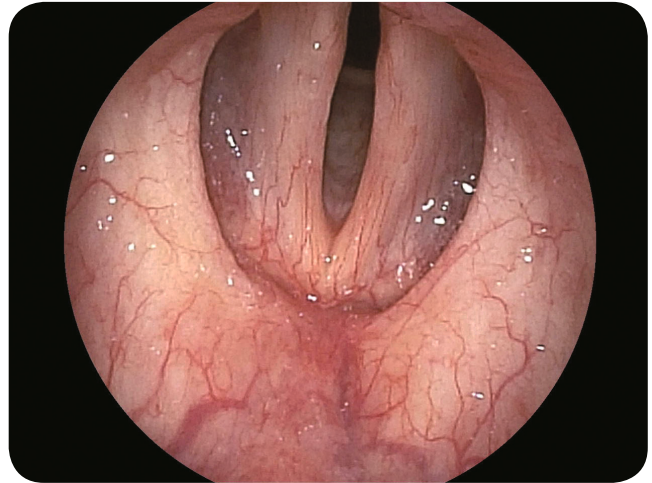
LARGER AND BRIGHTER IMAGES

The image on the monitor can be displayed 1.2 times larger than conventional models. The new optical system allows brighter images to be produced.

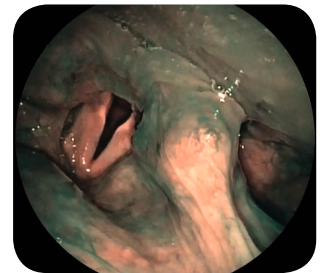
SUPPORT OF ACCURATE PROCEDURES

The smaller size of the LG lens has allowed the tip diameter to be reduced to just 2.9 mm. The diameter of the flexible part is also just 3.2 mm, meaning that ease of insertion has been improved while maintaining the capability of high resolution observation.

Used in combination with VP-4450HD and FICE (= Flexible spectral Imaging Color Enhancement),* it provides better contrast for vascular and surface patterns emphasizing the structure of tissue aspects and vessels. These features help to increase the accuracy of observation and diagnosis.



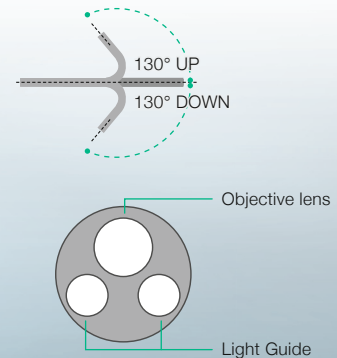
Normal



FICE



Viewing direction	0° (Forward viewing)
Field of view	90°
Observation range	3 – 50
Bending capability	Up 130° / Down 130°
Distal end diameter	2.9 mm
Flexible portion diameter	3.2 mm
Working length	300 mm
Total length	553 mm



* Fujifilm proprietary image processing technology

FUJIFILM

FUJIFILM Europe GmbH

Heesenstr. 31, 40549 Düsseldorf, Germany
Tel.: +49 211-50 89 0, Fax: +49 211-50 89 8700
www.fujifilm.eu, endoscopy@fujifilm.eu

Specifications are subject to change without notice. The name FUJIFILM and the FUJIFILM logo are trademarks of FUJIFILM Corporation. All other trademarks shown are trademarks of their respective owners. All rights reserved.
05/16